



LED LIGHTING CATALOG

2021

Overview

IEBSA Group was founded in 2013, is the national high-tech enterprises and a joint venture in Taiwan, America, Mexico and China, Located in Ningbo. IEBSA is a factory for Industrial & Public Lighting, providing services on designing, has been focused on PLEP chips and PCI heat sink technology, set up a PLEP Chip On Copper Board tech oriented R&D center, has a R&D team led by experts in the field of heat transfer technology.

All the products are UL/CUL/IEC/CE/RoHs/LM-80 certified

Partners



INVENTRONICS

PHILIPS

OSRAM



CREE

LUMILEDS

SAMSUNG

merrytek

HAISEN

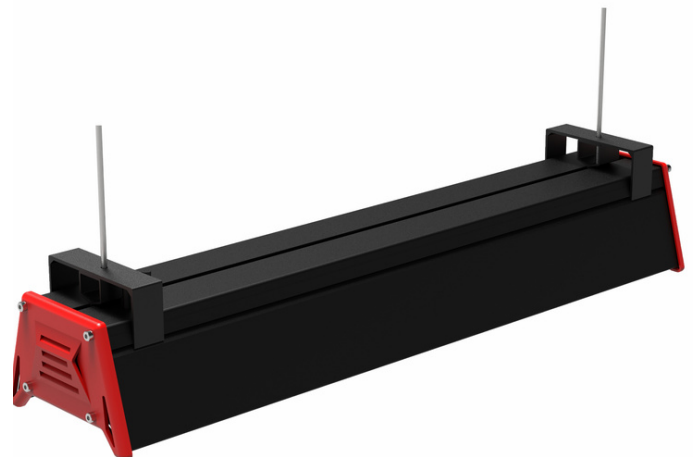
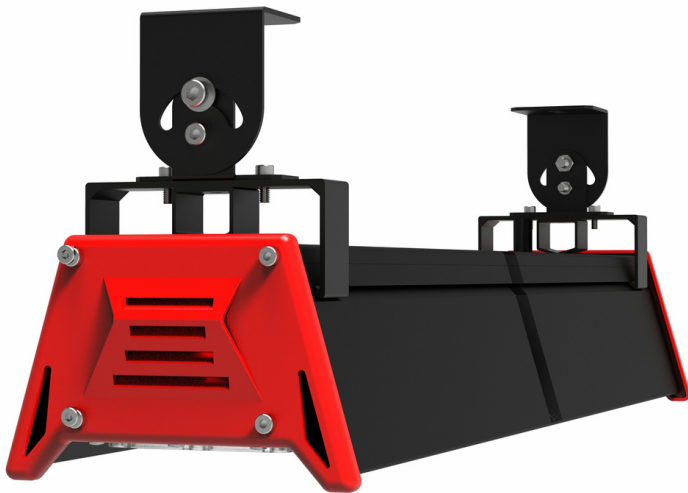
RUILEON
ELECTRONICS

Linear Industrial Light



BENEFITS

- **Intelligent working:** On/Off Function, Normal Motion detecting, Daylight Threshold.
- Metal Chain, Bracket installation
- Self-Cleaning, Non-dusk
- Excellent Heat Dissipation, Leave outlet, though the air circulation in the radiator to speed up the heat
- High Luminous 135-150Lm/w
- UL,CUL,CE,RoHs,IEC certificates



Technical Parameter

Model	Power	Input Voltage	Power Factor	Light Efficiency	CCT	CRI	Dimension (mm)
BSA-LH-DCT0050-201	50W	AC90-305Vac 50/60Hz	≥0.95	6750LM	2700-6500K	≥75	300*139.8*11.5
BSA-LH-DCT0100-201	100W			13500LM			600*139.8*11.5
BSA-LH-DCT0150-201	150W			20250LM			900*139.8*11.5
BSA-LH-DCT0200-201	200W			27000LM			1200*139.8*11.5

Panel Industrial Light

BENEFITS

- **Intelligent working:** On/Off Function, Normal Motion detecting, Daylight Threshold.
- Metal Chain, Bracket installation
- Excellent Heat Dissipation aluminum
- High Luminous 135-150Lm/w
- IP65 Design
- UL,CUL,CE,RoHs,IEC certificates

5&7
YEARS
WARRANTY



ON/OFF function



Normal motion detecting



Daylight threshold



Technical Parameter

Model	Power	Input Voltage	Power Factor	Light Efficiency	CCT	CRI	Dimension (mm)
BSA-PH-DCT0100-101	100W	AC90-260Vac & AC180-520Vac 50/60Hz	≥0.95	13500LM	2700-6500K	≥75	300*300*66
BSA-PH-DCT0150-101	150W			20250LM			600*300*66
BSA-PH-DCT0200-101	200W			27000LM			600*300*66
BSA-PH-DCT0250-101	250W			33750LM			900*300*66
BSA-PH-DCT0300-101	300W			40500LM			900*300*66

UFO Industrial Light

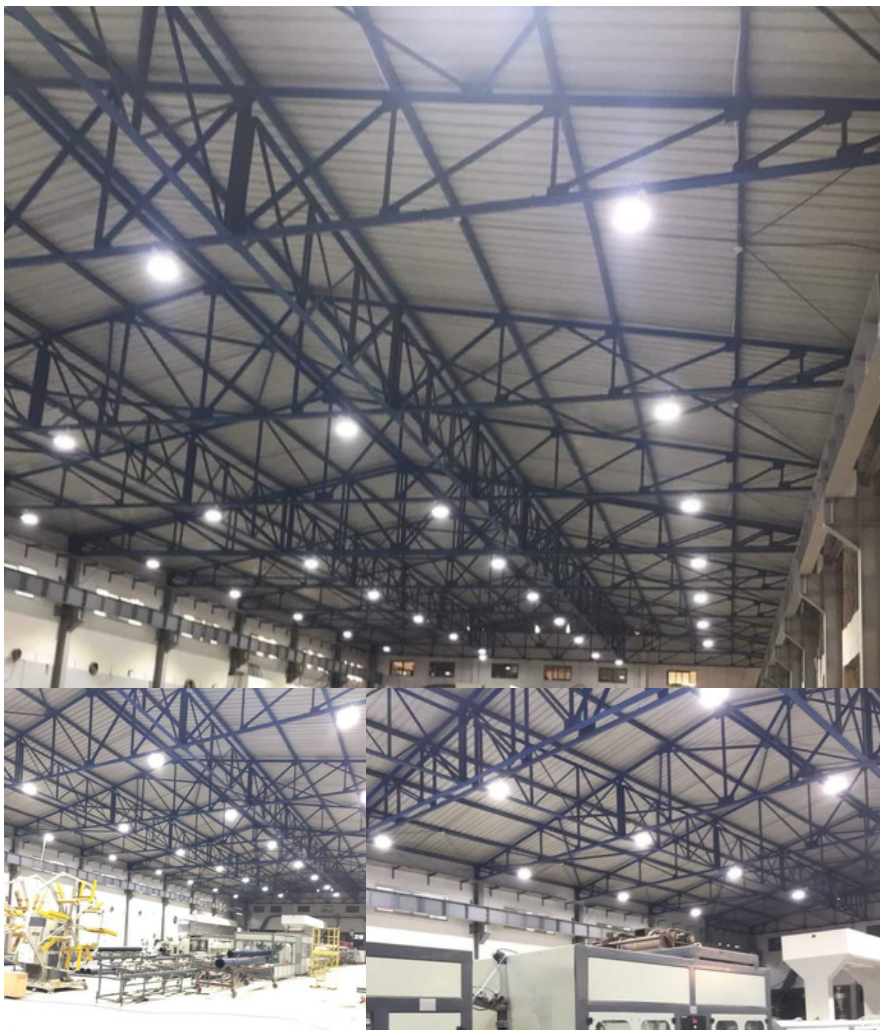
BENEFITS

- **Intelligent working:** On/Off Function, Normal Motion detecting, Daylight Threshold
- Aluminum Housing, Excellent Heat Dissipation
- **Non-yellowing Flat Glass**
- High Luminous 145Lm/w
- IP65
- CE,RoHS,IEC certificates



Technical Parameter

Model	Power	Input Voltage	Power Factor	Light Efficiency	CCT	CRI	Dimension (mm)
BSA-UH-DCT0060-101	60W	AC90-277V 50/60Hz	≥0.95	13000LM	2700-6500K	≥75	250*179
BSA-UH-DCT0100-101	100W			14500LM			
BSA-UH-DCT0150-101	150W			21750LM			300*182
BSA-UH-DCT0200-101	200W			29000LM			
BSA-UH-DCT0240-101	240W			34800LM			



BENEFITS

- Suitable Harsh Environment, High Temperature application
- Extremely Light Weight
- Non-yellowing, High Borosilicate Glass
- Cold Forging Aluminum Heat Dissipation 1070, High Heat Transfer
- Aluminum Reflector 45° 90° 120°
- Bracket, Hanger installation
- IP65, High Luminous 135-150Lm/w
- UL, CUL, CE, RoHs, IEC certificates



LM-80 IP66

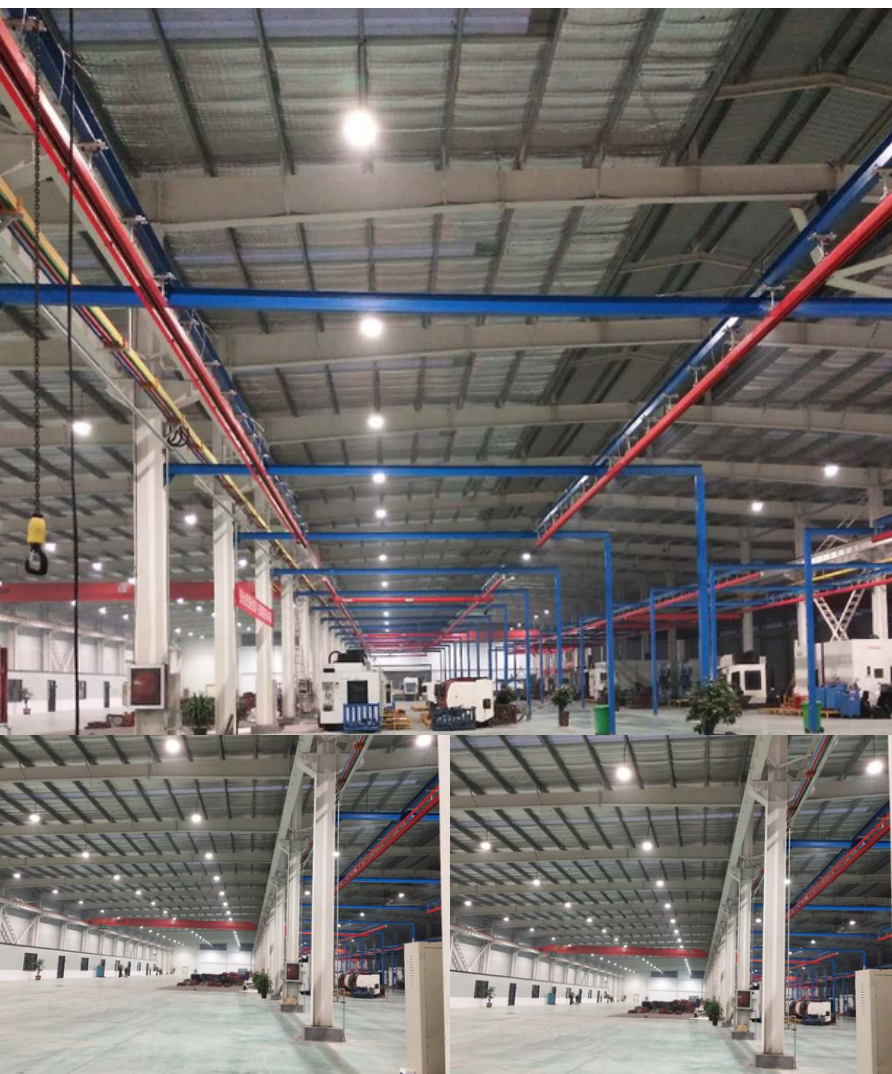


Technical Parameter

Model	Power	Replacement	Input Voltage	Light Efficiency	CCT	CRI	Dimension (mm)
BSA-UH-DCT0080-401	80W	HPS250W	AC90-305V 50/60Hz	10800LM	2700-6500K	≥75	343x343x365
BSA-UH-DCT0100-401	100W	HPS400W		13500LM			
BSA-UH-DCT0125-401	125W	HPS500W		16875LM			343x343x380
BSA-UH-DCT0150-401	150W	HPS600W		20250LM			481x481x361
BSA-UH-DCT0200-401	200W	HPS800W		27000LM			481x481x381

BENEFITS

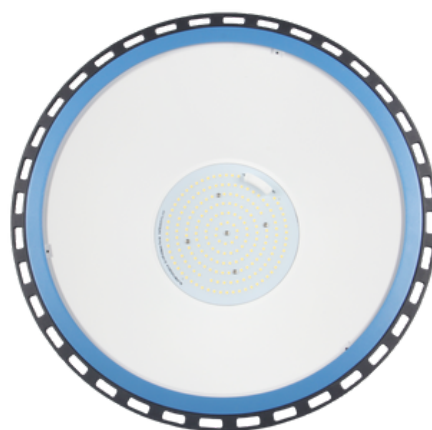
- High Luminous 135-150Lm/w
- Toughed Glass and Gasket
- Hanger, Bracket installation
- Excellent Heat Dissipation aluminum
- Nanometers tech reflector
- IP65, Indoor Outdoor application
- CE, RoHs, IEC certificates



5&7
YEARS
WARRANTY



CE PS E CQC LM-80 IP66



Technical Parameter

Model	Power	Replacement	Input Voltage	Light Efficiency	CCT	CRI	Dimension (mm)
BSA-UH-DCT0080-301	80W	HPS250W	AC90-305V 50/60Hz	10800LM	2700-6500K	≥75	202.5x280x225
BSA-UH-DCT0100-301	100W	HPS300W		13500LM			
BSA-UH-DCT0150-301	150W	HPS450W		20250LM			324x232x263
BSA-UH-DCT0200-301	200W	HPS600W		27000LM			380x272x267
BSA-UH-DCT0240-301	240W	HPS720W		32400LM			



BENEFITS

- **Intelligent working:** On/Off Function, Normal Motion detecting, Daylight Threshold
- Aluminum Housing, Excellent Heat Dissipation
- Tempered PC
- High Luminous 135Lm/w
- IP66
- CE, RoHS, IEC certificates

5&7
YEARS
WARRANTY



ON/OFF function



Normal motion detecting



Daylight threshold



LM-80 IP66



Technical Parameter

Model	Power	Input Voltage	Power Factor	Light Efficiency	CCT	CRI	Dimension (mm)
BSA-LL-DCT0030-005	30W	AC90-265Vac 50/60Hz	≥0.95	3900LM	2100-6500K	≥75	1200x90x74
BSA-LL-DCT0040-005	40W			5200LM			1200x90x74
BSA-LL-DCT0050-005	50W			6500LM			1500x90x74
BSA-LL-DCT0060-005	60W			7800LM			1500x90x74